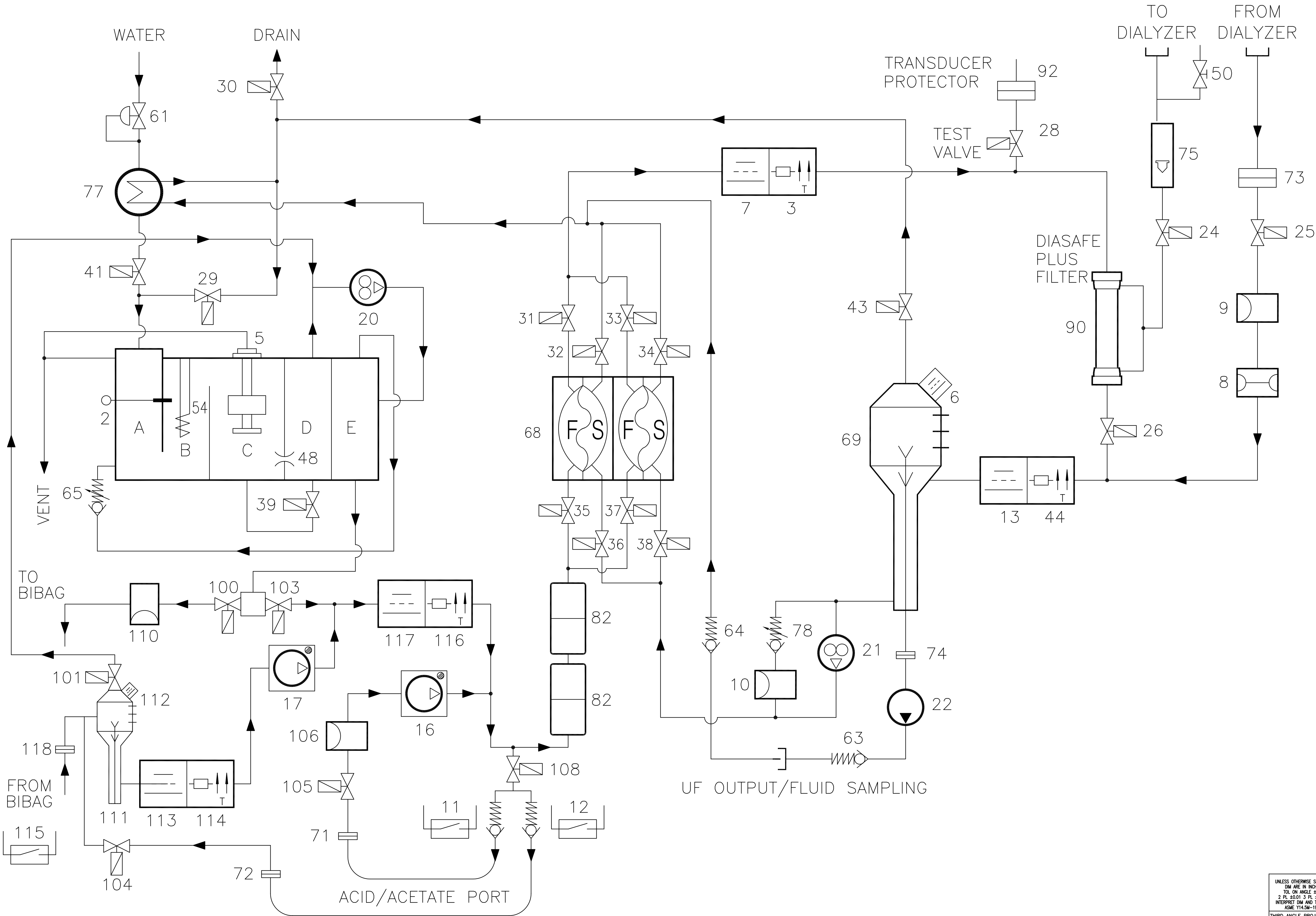


REV.	RELEASE DATE	EFFECTIVE DATE	ORIGINATOR	CHANGE#	DESCRIPTION OF CHANGES	APPROVAL
A	05/04/12	05/04/12	J. FOX	0N041884	RELEASE	A. BHATIA
B	01/28/14	01/28/14	J. FOX	0N047499	ADDED V108	R. RAMOS
C	03/07/15	03/07/15	J. FOX	0N050550	NEW ROUTE FOR V29	L. PANTOJA

HYDRAULICS: 2008T WITH DIASAFE PLUS FILTER, ONLINE CLEARANCE AND BIBAG GEN2

COMPONENT LIST FOR FLOW DIAGRAM 2008T

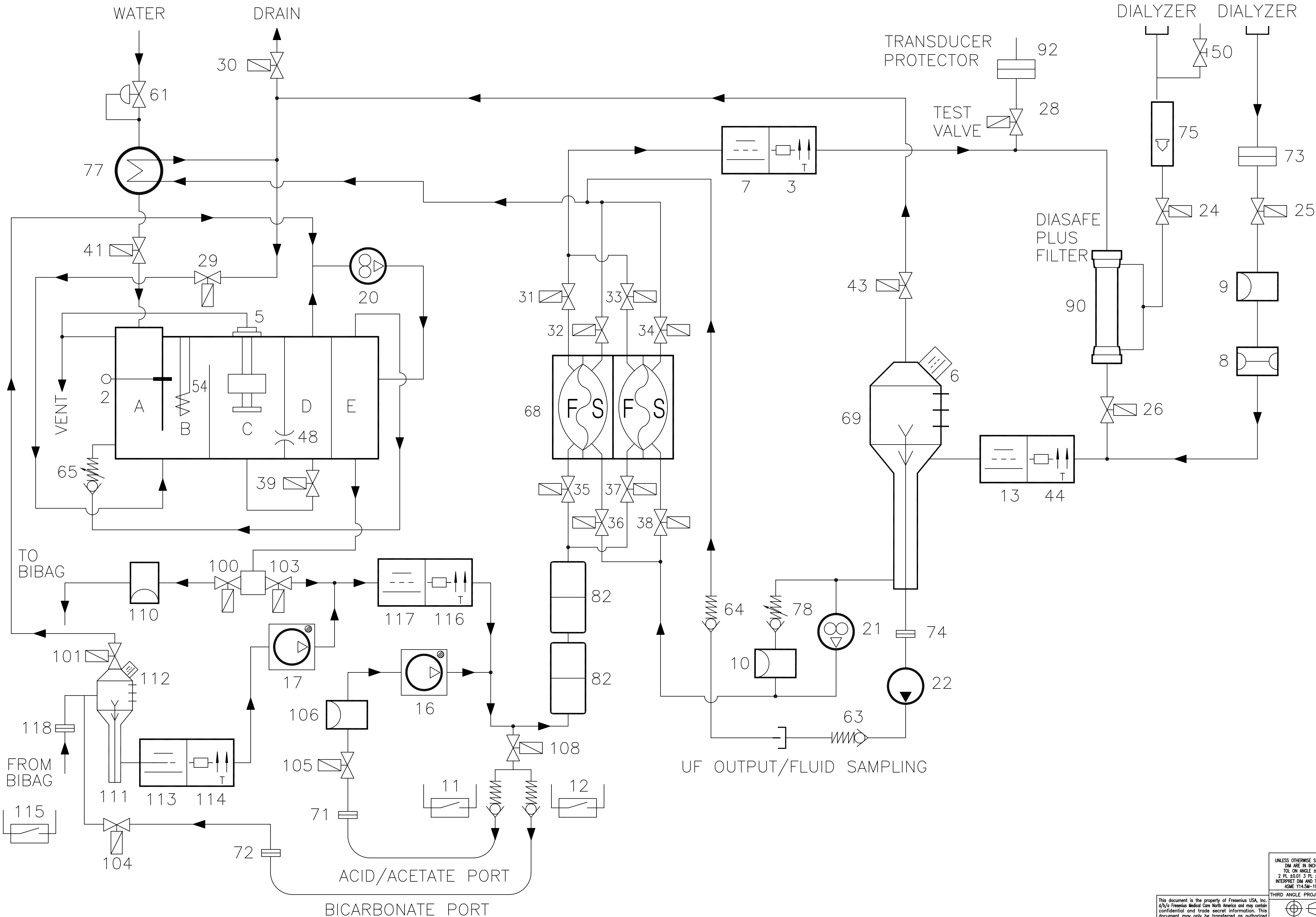
2. TEMPERATURE CONTROL THERMISTOR
3. TEMPERATURE MONITOR THERMISTOR
5. FLOAT SWITCH
6. AIR SENSOR IN AIR SEPARATOR CHAMBER.
7. CONDUCTIVITY CELL
8. BLOOD LEAK DETECTOR
9. DIALYSATE PRESSURE TRANSDUCER
10. CHAMBER FULL SWITCH
11. REED SWITCH CONCENTRATE CONNECTOR
12. REED SWITCH BICARBONATE CONNECTOR
13. POST CONDUCTIVITY CELL
16. CONCENTRATE PUMP
17. BICARBONATE PUMP
20. DEAERATION PUMP
21. FLOW PUMP
22. UF PUMP
24. DIALYZER VALVE 1
25. DIALYZER VALVE 2
26. BYPASS VALVE
28. TEST VALVE
29. RECIRCULATION VALVE
30. DRAIN VALVE
31. BALANCE CHAMBER VALVE
32. BALANCE CHAMBER VALVE
33. BALANCE CHAMBER VALVE
34. BALANCE CHAMBER VALVE
35. BALANCE CHAMBER VALVE
36. BALANCE CHAMBER VALVE
37. BALANCE CHAMBER VALVE
38. BALANCE CHAMBER VALVE
39. BYPASS VALVE FOR DEAERATION ORIFICE
41. WATER INLET VALVE
43. VENT VALVE FOR AIR SEPARATION CHAMBER
44. POST TEMPERATURE THERMISTOR
48. DEAERATION ORIFICE
50. SAMPLING VALVE
54. HEATER
61. WATER INLET PRESSURE REGULATOR
63. CHECK VALVE FROM UF PUMP TO SAMPLE PORT
64. CHECK VALVE FROM SAMPLE PORT TO DRAIN
65. LOADING PRESSURE VALVE
68. BALANCE CHAMBER
69. AIR SEPARATION CHAMBER
71. ACID/ACETATE FILTER
72. BICARBONATE FILTER
73. FROM DIALYZER LINE FILTER
74. UF PUMP FILTER
75. DIALYSATE LINE FLOW INDICATOR
77. HEAT EXCHANGER
78. FLOW PUMP PRESSURE RELIEF VALVE
82. MIXING CHAMBERS
90. DIASAFE PLUS FILTER
92. TRANSDUCER PROTECTOR
100. BIBAG FILL VALVE
101. BIBAG VENT VALVE
103. HYDROCHAMBER OUTLET VALVE
104. BICARBONATE PORT VALVE
105. ACID PORT VALVE
106. ACID PORT PRESSURE TRANSDUCER
108. RINSE PORT VALVE
110. BIBAG PRESSURE TRANSDUCER
111. BIBAG AIR SEPARATION CHAMBER
112. BIBAG AIR SEPARATION CHAMBER AIR SENSOR
113. BIBAG CONDUCTIVITY CELL
114. BIBAG TEMPERATURE THERMISTOR
115. BIBAG PRESENT SWITCH
116. BICARBONATE TEMPERATURE THERMISTOR
117. BICARBONATE CONDUCTIVITY CELL
118. BIBAG FILTER



UNLESS OTHERWISE SPECIFIED DIM ARE IN INCHES TOL ON ANGLE ±0.5° 2 PL. ±0.01 3 PL. ±0.005 INTERPRET DIM AND TOL PER ASME Y14.5M-1994		NAME J. FOX	DATE 10/16/09	
THIRD ANGLE PROJECTION		COMMENTS: N/A		
This document is the property of Fresenius USA, Inc. 4/1/11 Fresenius Medical Care North America and may contain confidential and trade secret information. This document may only be transferred as authorized by Fresenius Medical Care North America and then only by the way of loan for limited purposes. It may not be reproduced in whole or part and must be returned or destroyed upon request or upon completion of the purpose of the loan. ©Fresenius Medical Care North America 2009-2015				2008T HYDRAULIC FLOW DIAGRAM W/BIBAG GEN 2 SIZE D DWG. NO. 700084 REV. C SCALE: 1:1 CAD: AUTOCAD SHEET 1 OF 2

HYDRAULICS: 2008T WITH DIASAFE PLUS FILTER, ONLINE CLEARANCE AND BIBAG GEN2 (ENHANCED BACKFLOW PREVENTION)

COMPONENT LIST FOR FLOW DIAGRAM 2008T



2. TEMPERATURE CONTROL THERMISTOR
3. TEMPERATURE MONITOR THERMISTOR
5. FLOAT SWITCH
6. AIR SENSOR IN AIR SEPARATOR CHAMBER.
7. CONDUCTIVITY CELL
8. BLOOD LEAK DETECTOR
9. DIALYSATE PRESSURE TRANSDUCER
10. CHAMBER FULL SWITCH
11. REED SWITCH CONCENTRATE CONNECTOR
12. REED SWITCH BICARBONATE CONNECTOR
13. POST CONDUCTIVITY CELL
16. CONCENTRATE PUMP
17. BICARBONATE PUMP
20. DEAERATION PUMP
21. FLOW PUMP
22. UF PUMP
24. DIALYZER VALVE 1
25. DIALYZER VALVE 2
26. BYPASS VALVE
28. TEST VALVE
29. RECIRCULATION VALVE
30. DRAIN VALVE
31. BALANCE CHAMBER VALVE
32. BALANCE CHAMBER VALVE
33. BALANCE CHAMBER VALVE
34. BALANCE CHAMBER VALVE
35. BALANCE CHAMBER VALVE
36. BALANCE CHAMBER VALVE
37. BALANCE CHAMBER VALVE
38. BALANCE CHAMBER VALVE
39. BYPASS VALVE FOR DEAERATION ORIFICE
41. WATER INLET VALVE
43. VENT VALVE FOR AIR SEPARATION CHAMBER
44. POST TEMPERATURE THERMISTOR
48. DEAERATION ORIFICE
50. SAMPLING VALVE
54. HEATER
61. WATER INLET PRESSURE REGULATOR
63. CHECK VALVE FROM UF PUMP TO SAMPLE PORT
64. CHECK VALVE FROM SAMPLE PORT TO DRAIN
65. LOADING PRESSURE VALVE
68. BALANCE CHAMBER
69. AIR SEPARATION CHAMBER
71. ACID/ACETATE FILTER
72. BICARBONATE FILTER
73. FROM DIALYZER LINE FILTER
74. UF PUMP FILTER
75. DIALYSATE LINE FLOW INDICATOR
77. HEAT EXCHANGER
78. FLOW PUMP PRESSURE RELIEF VALVE
82. MIXING CHAMBERS
90. DIASAFE PLUS FILTER
92. TRANSDUCER PROTECTOR
100. BIBAG FILL VALVE
101. BIBAG VENT VALVE
103. HYDROCHAMBER OUTLET VALVE
104. BICARBONATE PORT VALVE
105. ACID PORT VALVE
106. ACID PORT PRESSURE TRANSDUCER
108. RINSE PORT VALVE
110. BIBAG PRESSURE TRANSDUCER
111. BIBAG AIR SEPARATION CHAMBER
112. BIBAG AIR SEPARATION CHAMBER AIR SENSOR
113. BIBAG CONDUCTIVITY CELL
114. BIBAG TEMPERATURE THERMISTOR
115. BIBAG PRESENT SWITCH
116. BICARBONATE TEMPERATURE THERMISTOR
117. BICARBONATE CONDUCTIVITY CELL
118. BIBAG FILTER

<small>UNLESS OTHERWISE SPECIFIED DIM ARE IN INCHES TOL ON ANGLE ±0.5° 2 PL 50.001 3 PL 50.005 INTERPRET DIM AND TOL PER ASME Y14.5M-1994</small>	NAME	DATE	
	DRAWN	J. FOX	
<small>THIRD ANGLE PROJECTION</small>	COMMENTS:		2008T HYDRAULIC FLOW DIAGRAM W/BIBAG GEN 2
<small>MATERIAL N/A FINISH N/A</small>	N/A		
<small>This document is the property of Fresenius USA, Inc. 4/1/09 Fresenius Medical Care North America and may contain confidential and trade secret information. This document may only be transferred as authorized by Fresenius Medical Care North America and then only by the way of loan for limited purposes. It may not be reproduced in whole or part and must be returned or destroyed upon request or upon completion of the purpose of the loan. ©Fresenius Medical Care North America 2009-2015</small>	<small>SCALE: 1:1</small>	<small>CAD: AUTOCAD</small>	<small>SHEET 2 OF 2</small>